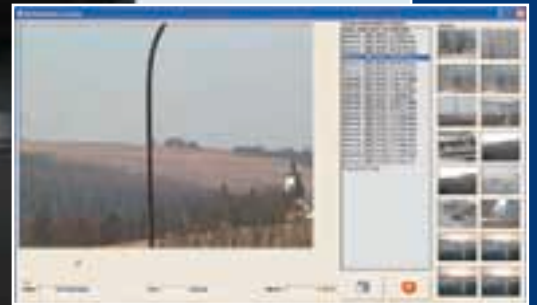


# *SMV*

## *Surveillance and Monitoring Vehicle*

*Exported by OMNIPOL a. s.*



*Export Training*  
*Maintenance Overhauls*  
*Related Services*

**OMNIPOL a. s. Prague, Czech Republic**

## **SMV Surveillance and Monitoring Vehicle**

*This lightweight, highly mobile system is designed for the terrain observation, especially of persons and objects under day and night conditions using TV and IR (infra-red) camera systems installed on an elevating platform. The main mission of the SMV is the detection, recognition and identification of persons and vehicles, taking their photos, determining their position, electronic processing and storage of photos and measured data. Simplicity and low weight of the system determine its integration into various types of vehicles, including personal off-road vehicles. The system modularity enables to set up an optimum combination of cameras for police corps, particularly for border guard police. The system software provides the operator with an integrated presentation of a wide range of data and digital imagery enabling him to fully control the system easily from his workplace.*

### **Main Features:**

- *Modular technology*
- *Compact design and low weight*
- *Long range and outstanding surveillance and monitoring resolution*
- *Friendly and simple control of the systems*
- *Wide operational capabilities*
- *Very low power consumption*
- *High reliability*
- *Customised technical performance*

### **Basic Configuration:**

- *VW Transporter Syncro or other type according to the customer's requirements*
- *Lifting device with "pan/tilt" head containing a laser rangefinder, an infra-red (thermal imaging) camera and a day colour TV CCD camera*
- *Vehicle protection system (PIR sensors, seismic sensors)*
- *Control and display unit equipped with a powerful computer and software including digital maps and GPS system*
- *GPS navigation system*
- *Two colour monitors*
- *Radio communication system according to the customer's requirements*
- *Video recorder*
- *Built-in power supply system*

### **Technical Parameters:**

<i>Traverse range</i>	<i>360°</i>
<i>Elevation range</i>	<i>+/- 40°</i>
<i>Position reading accuracy</i>	<i>0,1 mrad</i>
<i>Rotation speed of the sensor head</i>	<i>0.03° to 60° /s</i>
<i>Target (person) detection range by day colour TV CCD camera</i>	<i>up to 6 km</i>
<i>Target (person) detection range by the infra-red camera</i>	<i>up to 8 km</i>
<i>Crew</i>	<i>one operator</i>
<i>Power supply</i>	<i>24V DC</i>

**For more information, please contact:**



**OMNIPOL a. s.**  
**Nekázanka 11, 112 21 Praha 1**  
**Czech Republic**



*Land Forces Equipment Department:  
Phone: +420 224 011 176  
Fax: +420 224 012 199*

*E-mail: [omni22@omnipol.cz](mailto:omni22@omnipol.cz)*

*<http://www.omnipol.cz>*